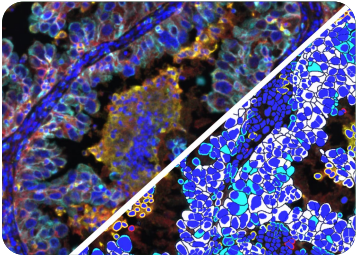


HALO[®] MODULES

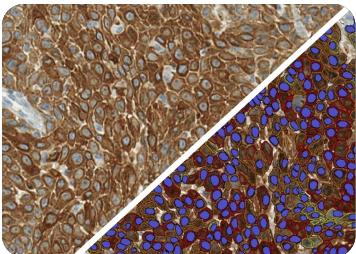
HALO[®] modules enable extensive analytics while streamlining image analysis workflows and are purpose built for a range of applications, imaging methods, and research areas. Learn about our most popular HALO modules and workflow add-ons below.

indica labs
AI-POWERED PATHOLOGY



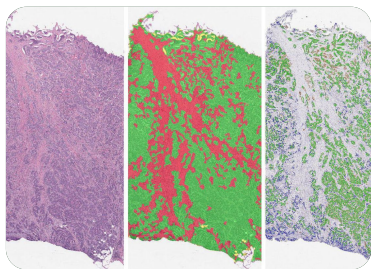
Highplex FL

Quantify expression of an unlimited number of biomarkers in any cellular compartment – membrane, nucleus, or cytoplasm.



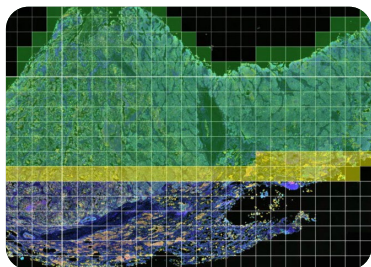
Multiplex IHC

Quantify expression of up to five brightfield stains in any cellular compartment – membrane, nucleus, or cytoplasm.



Serial Section Add-on

Analyze serial tissue sections stained with different markers or a single tissue section that has been stained, stripped, and re-stained for multiple markers.



Analysis Cluster Add-on

Process multiple images in parallel to maximize throughput and minimize analysis job turnaround times.

Learn more about these HALO modules at indicalab.com/halo/halo-modules

Contact us for more information, demo, or trial.

US Headquarters

Indica Labs, LLC
8700 Education PI NW, Bldg B
Albuquerque, NM 87114 USA
+1 (505) 492-0979
info@indicalab.com

Tech Support: support@indicalab.com
Website: <https://indicalab.com>

UK and Europe

+44 (0)333 090 1113
emea@indicalab.com

Japan

+81 (0)3 4400 0466
japan@indicalab.com

China

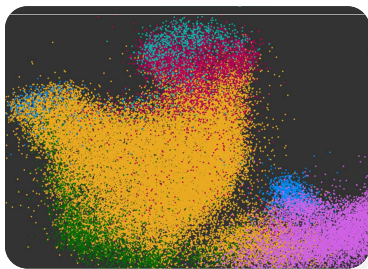
+86 13761896143
china@indicalab.com



Indica Labs

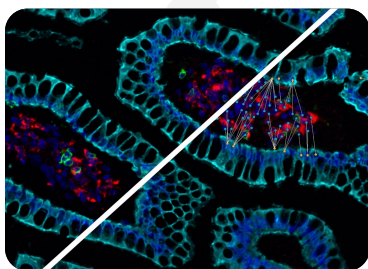


@IndicaLabs.HALO



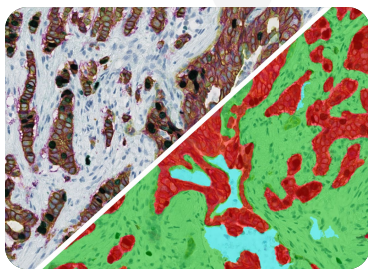
High Dimensional Analysis

Acquire deeper insights into complex data sets using dimensional reduction and unsupervised clustering with interactive plotting.



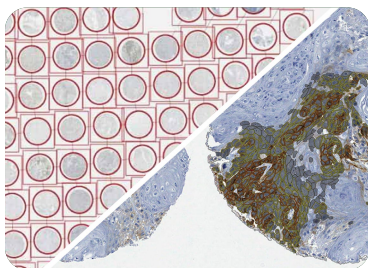
Spatial Analysis

Plot cells and objects from one or more images and perform nearest neighbor, proximity, and tumor infiltration analyses.



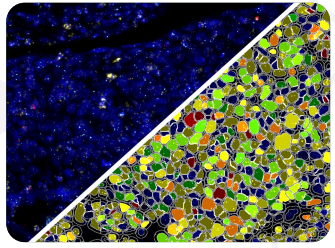
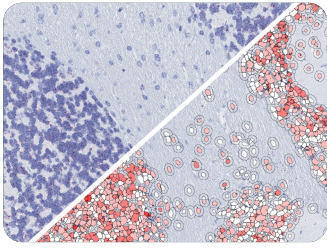
Tissue Classifier Add-on

Separate multiple tissue classes across a tissue using a learn-by-example approach.



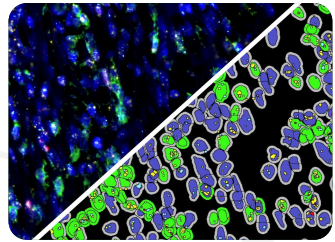
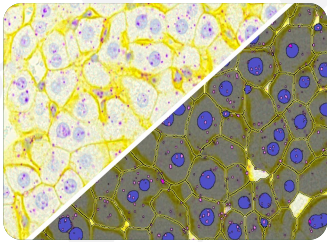
Tissue Microarray Add-on

Perform automated, high-throughput segmentation and batch analysis of whole slide tissue microarray images.



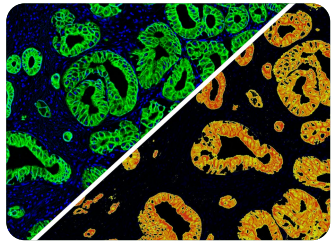
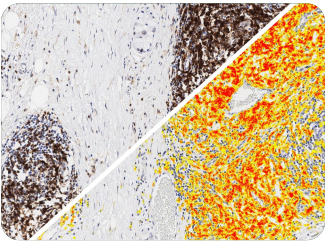
ISH and FISH

Simultaneously analyze chromogenic or fluorescently labeled nucleic acid probes on a cell-by-cell basis.



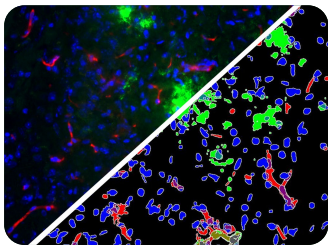
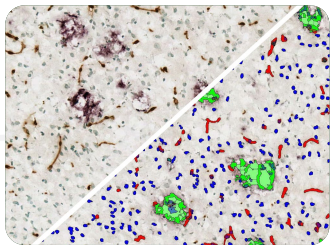
ISH-IHC and FISH-IF

Simultaneously analyze chromogenic or fluorescently labeled nucleic acid probes and protein biomarkers on a cell-by-cell basis.



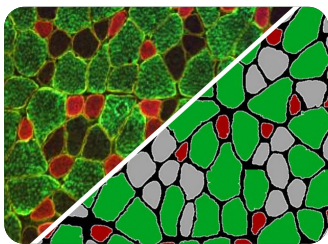
Area Quantification BF and FL

Measure the positive area, average intensity, and colocalization of up to five stains or unlimited fluorescent dyes.



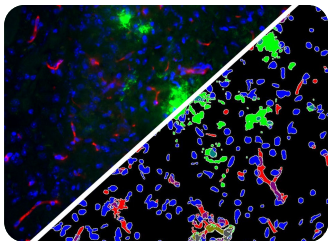
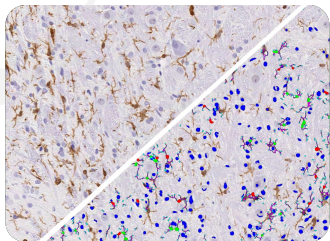
Object Colocalization BF and FL

Simultaneously analyze up to five stains or unlimited fluorescent dyes and measure object density, area, diameter, and intensity, as well as colocalization.



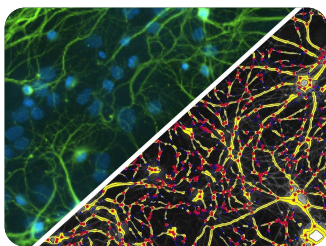
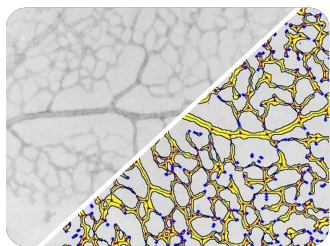
Muscle Fiber BF and FL

Quantify area, diameter, marker positivity, and more for muscle fibers in brightfield or fluorescent images.



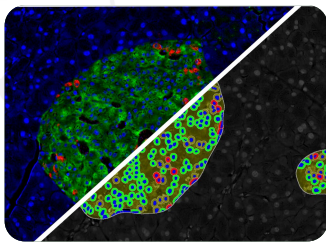
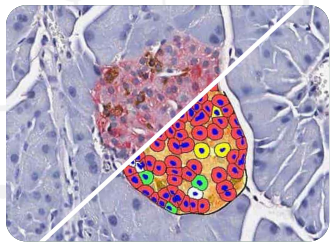
Microglial Activation BF and FL

Quantify microglial activation in brightfield or fluorescent images based on detection of microglia, soma, and processes.



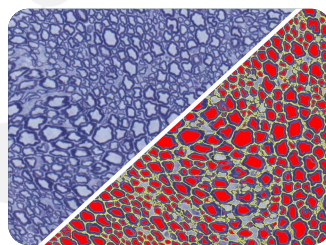
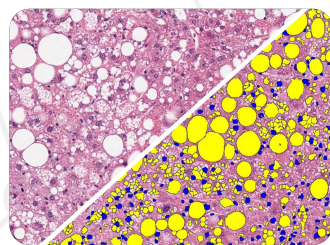
Branch Structure BF and FL

Quantify branch ends, area, length, and more for branched structures such as retinal vessels and cortical neurons in brightfield or fluorescent images.



Islet Quantification BF and FL

Count and measure pancreatic islets in brightfield or fluorescent images, quantifying islet area and cells positive for islet-specific stains.



Vacuole Quantification

Quantify the area, diameter, perimeter, and number of white spaces per region of interest.

Axon Quantification

Quantify axons in nerve cross sections and calculate area, inner and outer diameter, myelin area, and G-ratio.